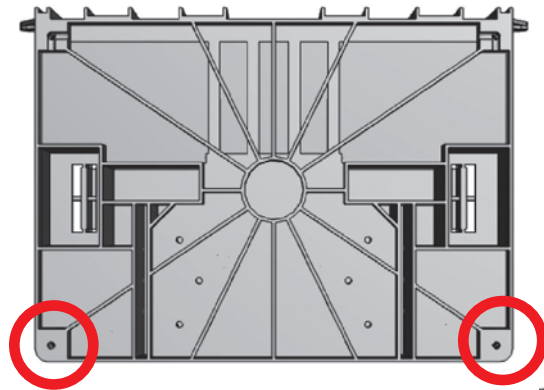
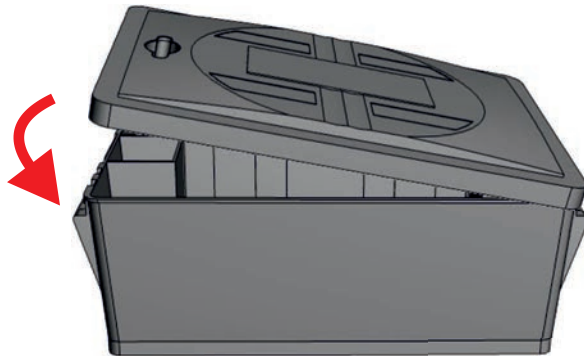
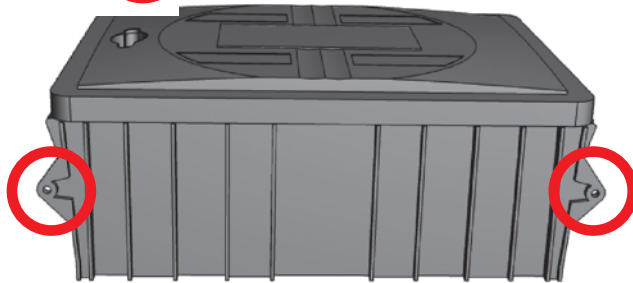


Multibaiter[®] rat-feeding box

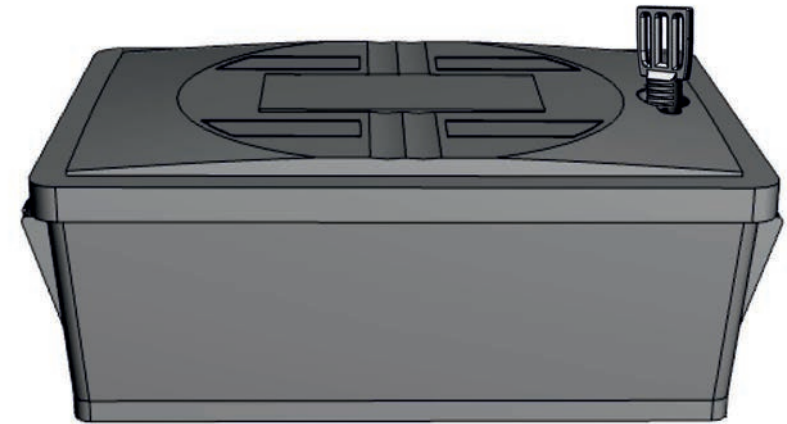
Installation Guide



The box can be fixed (screwed) to the ground through the holes in the base or to the wall with the help of the two flaps on the back.



The black or transparent lid opens sideways and may be mounted either from the right or the left.

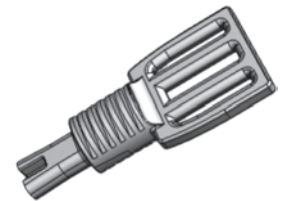


Rat-feeding box with slightly arched lid allowing run-off of rain-water. Dedicated area to place personalised label and warning on the lid. The lid easily opens with the key turned anti-clockwise. Also available with transparent lid which allows to check bait consumption without opening the box.

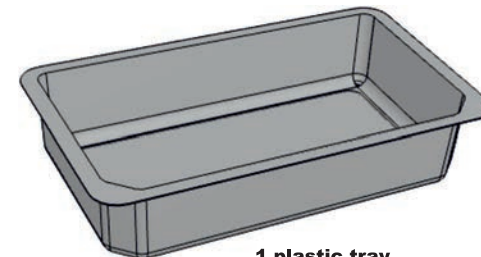
Accessories



1 horizontal metal rod



Key

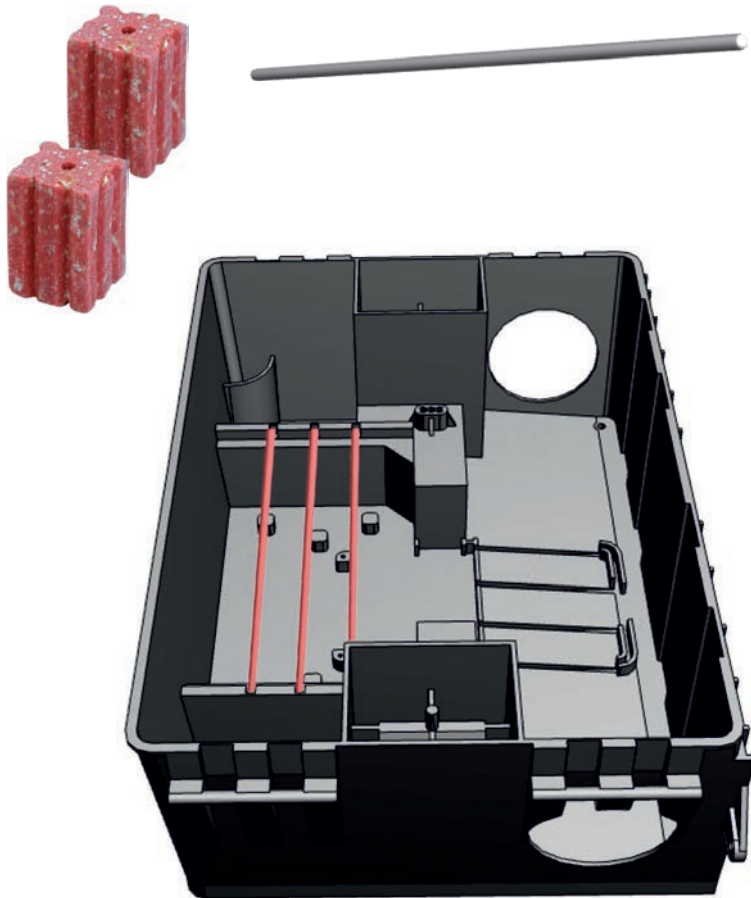


1 plastic tray

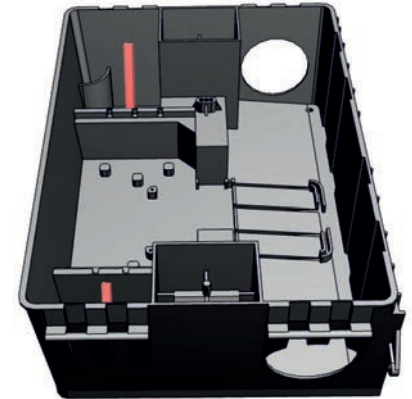
Packed full with attractive features

Special rods facilitate placement of various bait formulations inside the box. The box is suitable for safe application of all kind of rodenticide formulations including the special trays with aroma permeable foil produced by BĀBOLNA BIO. Replaceable rods allow for safe placing and fastening of the bait formulations. The rims and sills inside the box prevent spillage of the bait.

1. Installing horizontal rod for fixing extruded wax blocks in three different positions



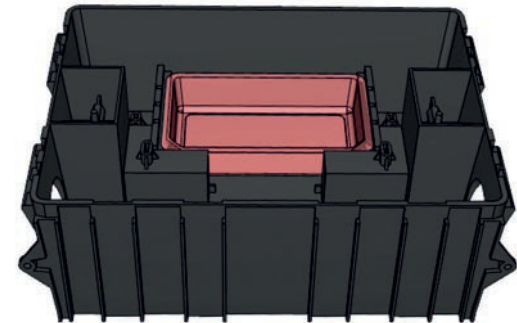
2. Built-in vertical rods for fixing extruded wax blocks



3. Empty plastic tray to be filled with bait



The ready-to-use, aroma permeable packages produced by Bābolna Bio and ensuring 'no-touch' application of the rodenticide may also be inserted instead of the empty tray.



4. Guillotine trap to be placed (not included, subject to purchase)

